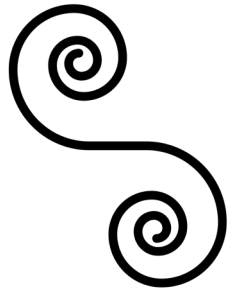


# the ART of WOOD

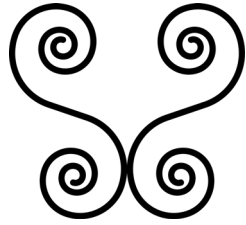
*intro to La Tène art style,  
for body paint artists.*

**Bran Mydwynter**

v 4.0



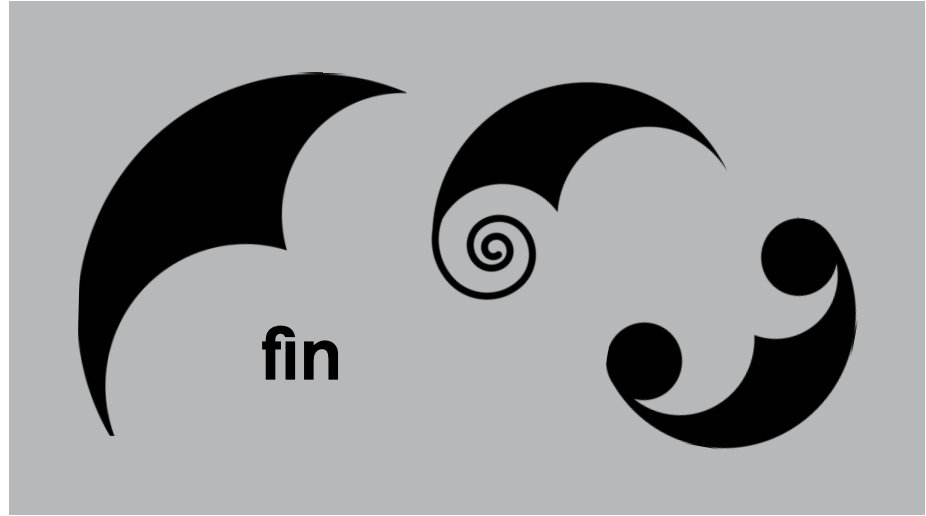
**s-scroll**



**lyre**



**triskele**



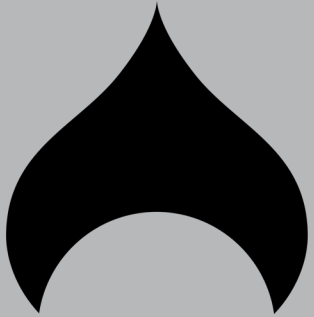
**fin**



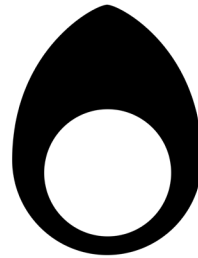
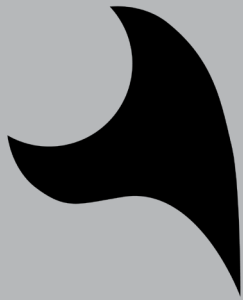
**lentoid**



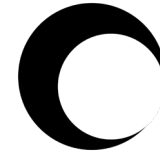
**comma**



**trumpets**



**keeled  
roundel**



**armadillo**



**cusp**



## Newgrange kerbstone K1: the entrance stone

Boyne Valley, County Meath, Ireland  
3200 BCE  
<https://www.newgrange.com/>



## Towie ball

Aberdeenshire, Scotland  
3000 BCE  
3D scan by Dr Hugo Anderson-Whymark: <https://sketchfab.com/3d-models/towie-carved-stone-ball-scotland-a00b7b2d813c4b33a4f5fe91f8e83828>  
item at <https://www.nms.ac.uk/explore-our-collections/collection-search-results/carved-stone-ball/75327>



## Folkton Drums (top)

North Yorkshire, England  
2500BCE–2000BCE  
[https://www.britishmuseum.org/collection/object/H\\_1893-1228-15](https://www.britishmuseum.org/collection/object/H_1893-1228-15)



**Wandsworth Shield Boss**

Wandsworth, London, England

350 BCE–150 BCE

[https://www.britishmuseum.org/collection/object/H\\_1858-1116-2](https://www.britishmuseum.org/collection/object/H_1858-1116-2)

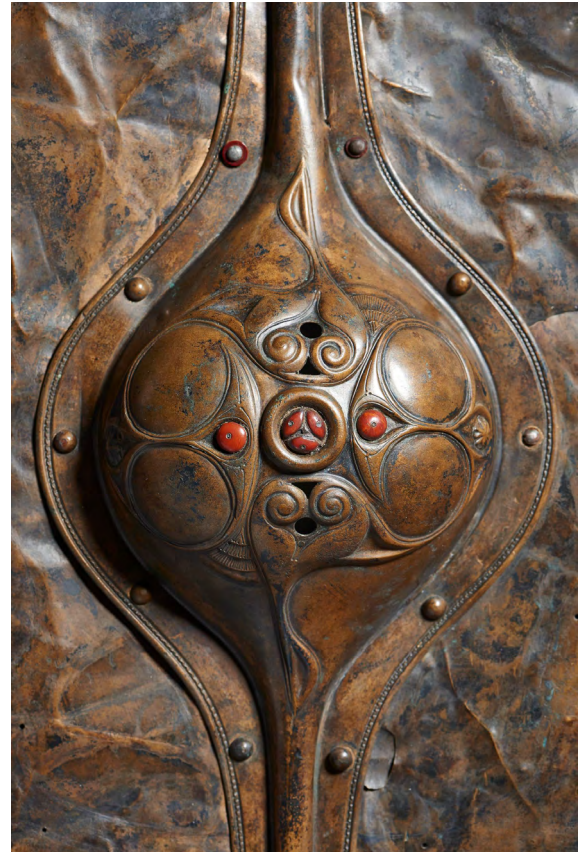


## Witham Shield

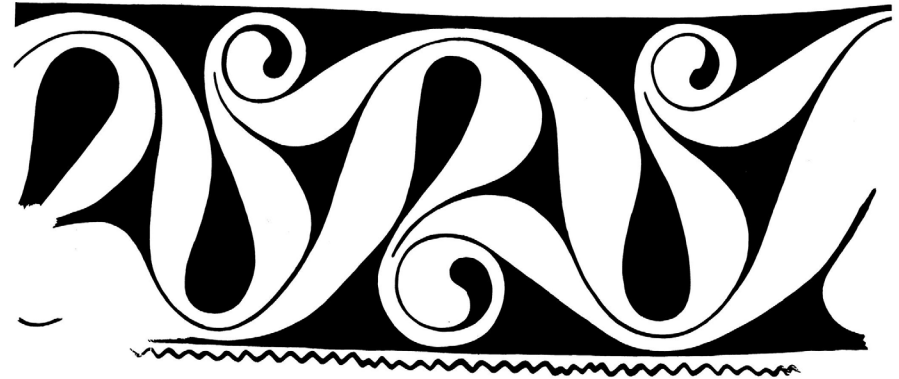
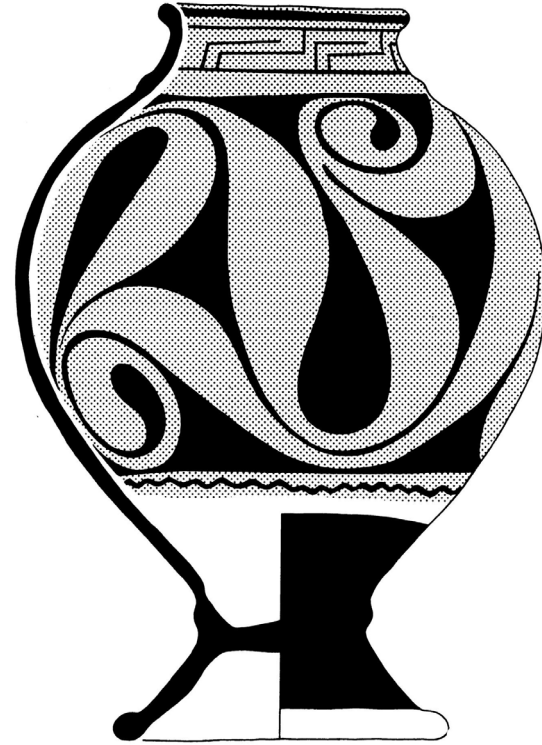
Witham River, Lincolnshire, England

400 BCE–300 BCE

[https://www.britishmuseum.org/collection/object/H\\_1872-1213-1](https://www.britishmuseum.org/collection/object/H_1872-1213-1)



# S-scroll



## Prunay Vase

Prunay, Marne, Champagne-Ardenne, France  
400 BCE–350 BCE  
[https://www.britishmuseum.org/collection/object/H\\_ML-2734](https://www.britishmuseum.org/collection/object/H_ML-2734)



**Disc of Auvers sur Oise**

Auvers sur Oise, France  
400 BC

<https://medaillesetantiques.bnf.fr/ark:/12148/c33gbpnr>



**Amfreville Helmet**

Amfreville-sous-les-Monts, France

3rd century BC

<https://musee-archeologienationale.fr/collection/objet/casque>





### Torrs Pony Cap

found Torrs, southwest Scotland  
ca. 3rd–2nd c BCE

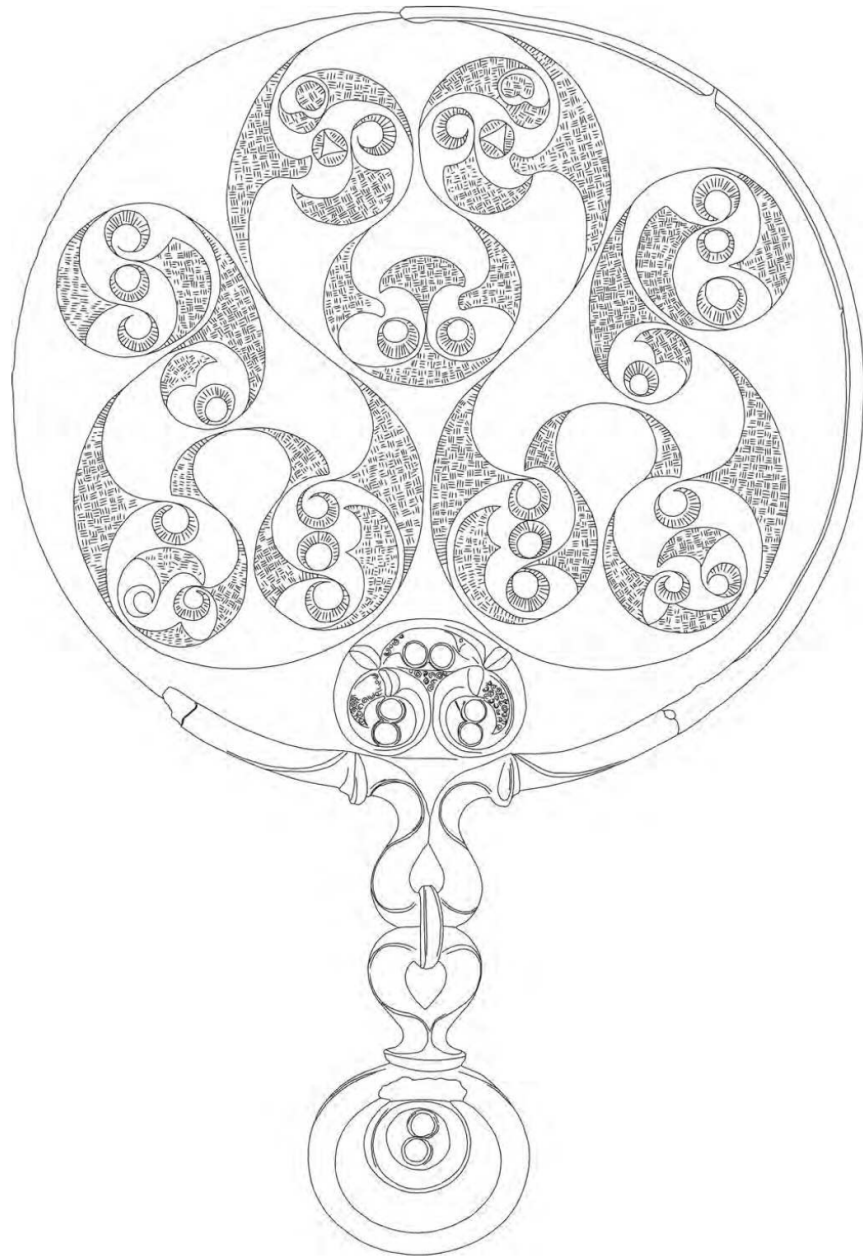
<https://www.nms.ac.uk/search-our-collections/collection-search-results?entry=132553>



### Desborough Mirror

found Northamptonshire, Desborough, England  
ca. 50 BCE–50 CE

[https://www.britishmuseum.org/collection/object/H\\_1924-0109-1](https://www.britishmuseum.org/collection/object/H_1924-0109-1)



### Birdlip Mirror

found Gloucester, England  
ca. 50 CE

<https://www.museumofgloucester.co.uk/collections>

sketch: "Iron Age Mirrors: A Biographical Approach" Judy Joy, 2010



**Bulgarian/Danube torc**

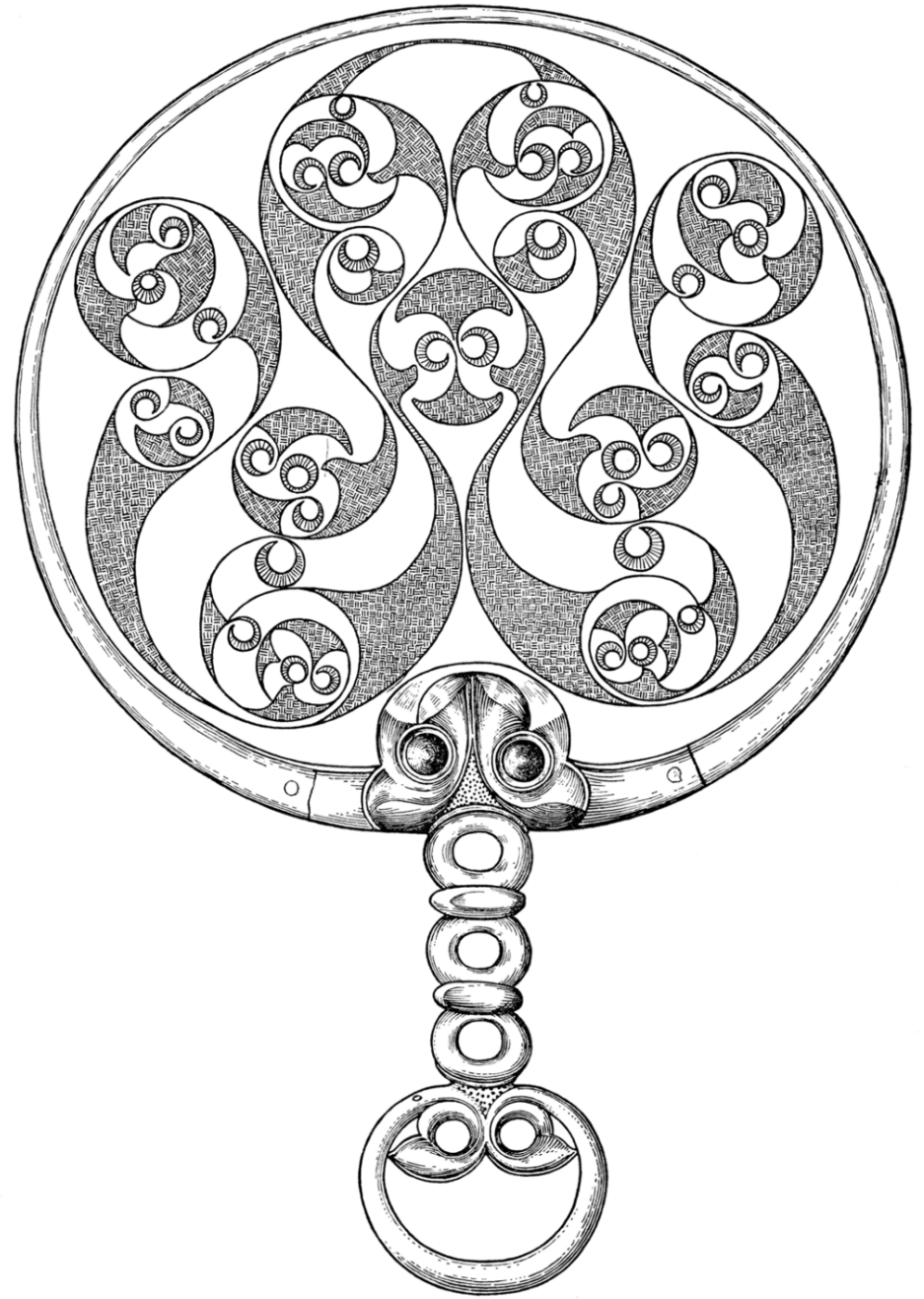
found Mihailougrad, Bulgaria  
3rd century BCE



### **Brentford Chariot Fitting**

find spot unknown (maybe Brentford, England)  
100 BCE–50 CE

<http://thomaslayton.org.uk/2012/10/08/bronze-chariot-fitting/>



**Holcombe mirror**

Devon, England

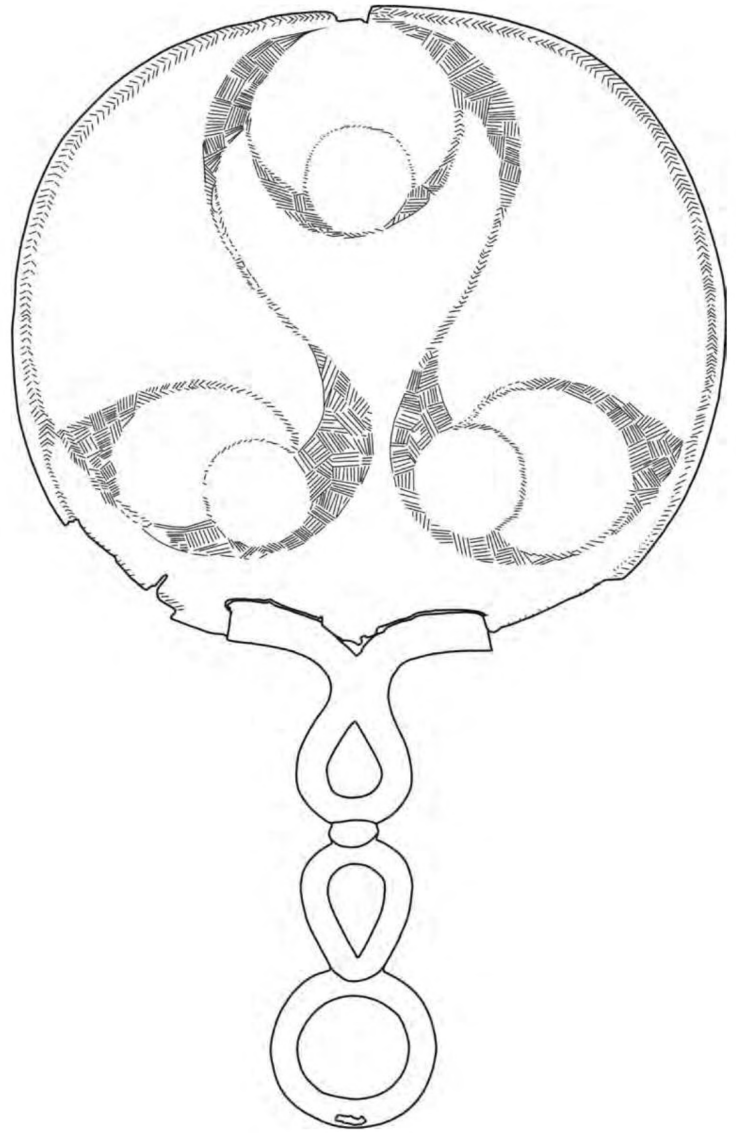
50 BCE–70 CE

[https://www.britishmuseum.org/collection/object/H\\_1971-0401-1](https://www.britishmuseum.org/collection/object/H_1971-0401-1)

sketch: "Iron Age Mirrors: A Biographical Approach" Judy Joy, 2010

# keeled roundel

the ART of  
WOOD



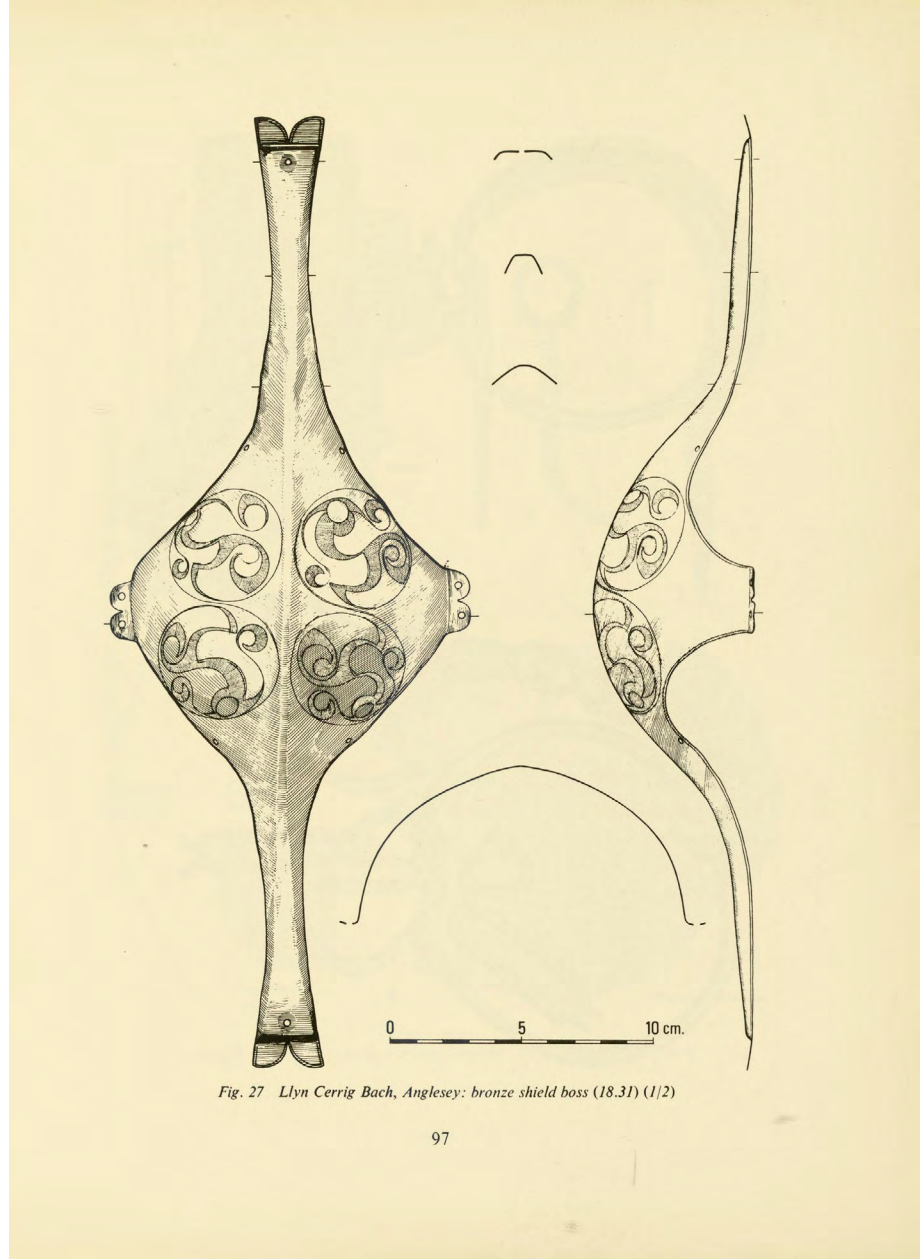
## Aston mirror

Hertfordshire, England

50 BCE—50 BCE

[https://www.britishmuseum.org/collection/object/H\\_1979-1002-1](https://www.britishmuseum.org/collection/object/H_1979-1002-1)

sketch: "Iron Age Mirrors: A Biographical Approach" Judy Joy, 2010



**Llyn Cerrig Bach shield boss**

Anglesey  
100 BCE–50 CE

<https://museum.wales/collections/online/object/673f3849-0f1c-3140-81bf-2635987813c4/Iron-Age-copper-alloy-shield-boss/>



lentoid

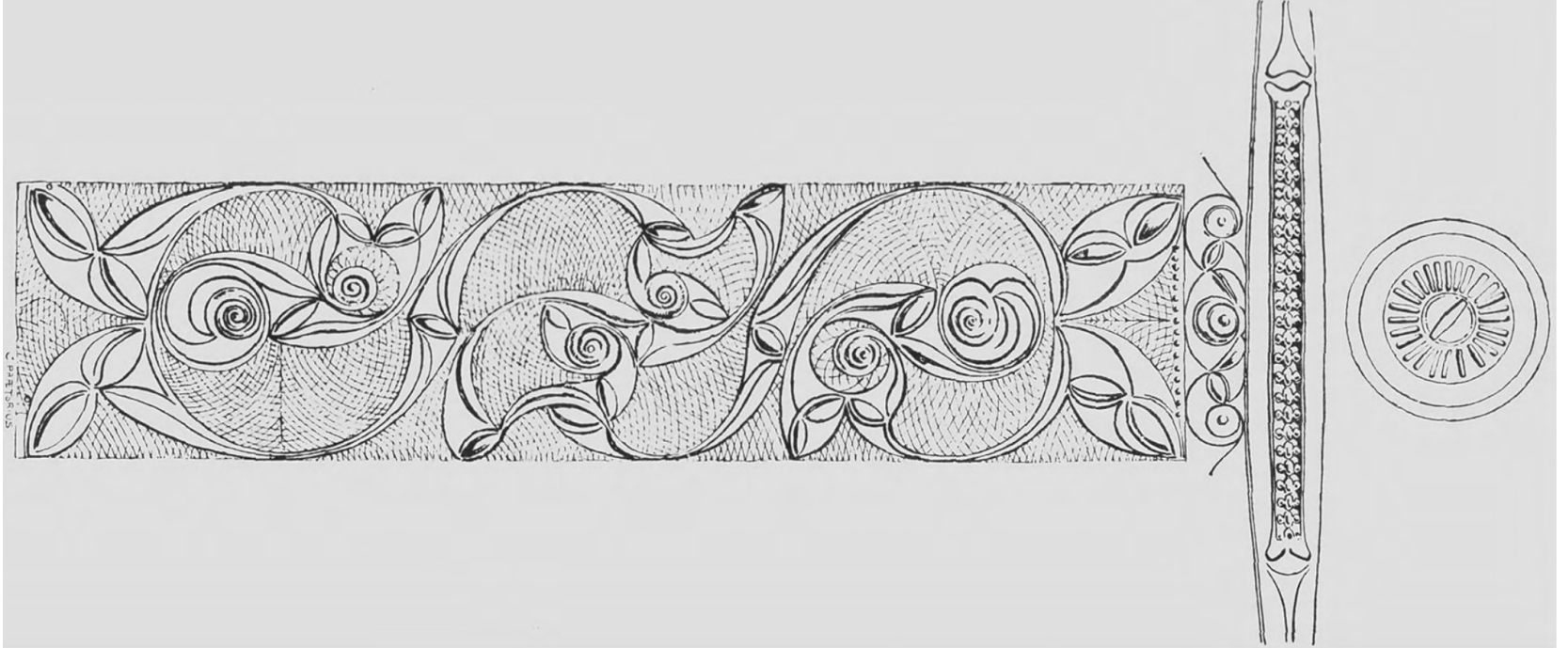


**Llyn Cerrig Bach shield boss**

Anglesey

100 BCE–50 CE

<https://museum.wales/collections/online/object/673f3849-0f1c-3140-81bf-2635987813c4/Iron-Age-copper-alloy-shield-boss/>



## Broighter Torc

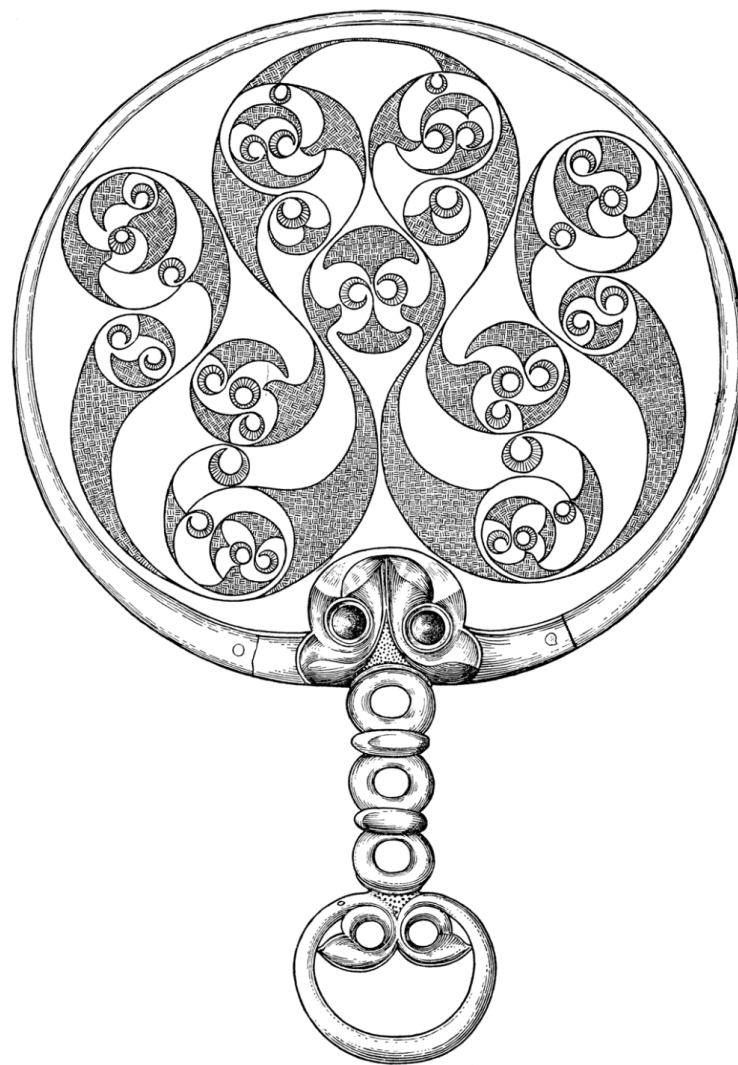
Lough Foyle, Broighter County, Derry, Ireland  
1st c BCE

<https://www.museum.ie/en-IE/Collections-Research/Collection/The-Treasury/Artefact/The-Broighter-Collar/26dc0a99-6da3-40a3-8ae1-78b0c6513dc5>

sketch: "The Broighter Boat: A Reassessment" A. W. Farrell, S. Penny and E. M. Jope, 1975



Llyn Cerrig Bach shield boss



Holcombe mirror

# masks



**gold ring**

Mezek, Southern Bulgaria

4th–5th c BCE

<https://www.metmuseum.org/art/collection/search/478986>



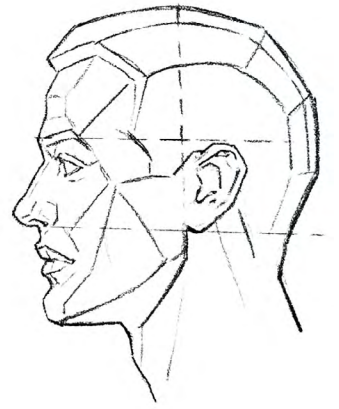
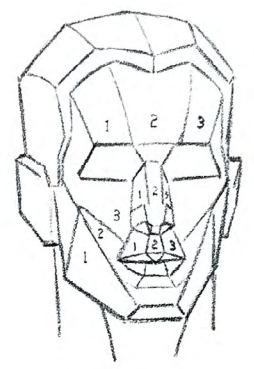
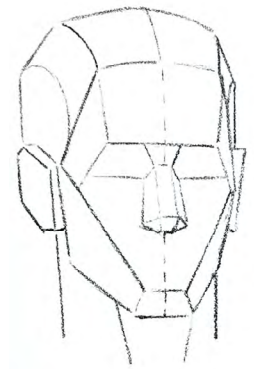
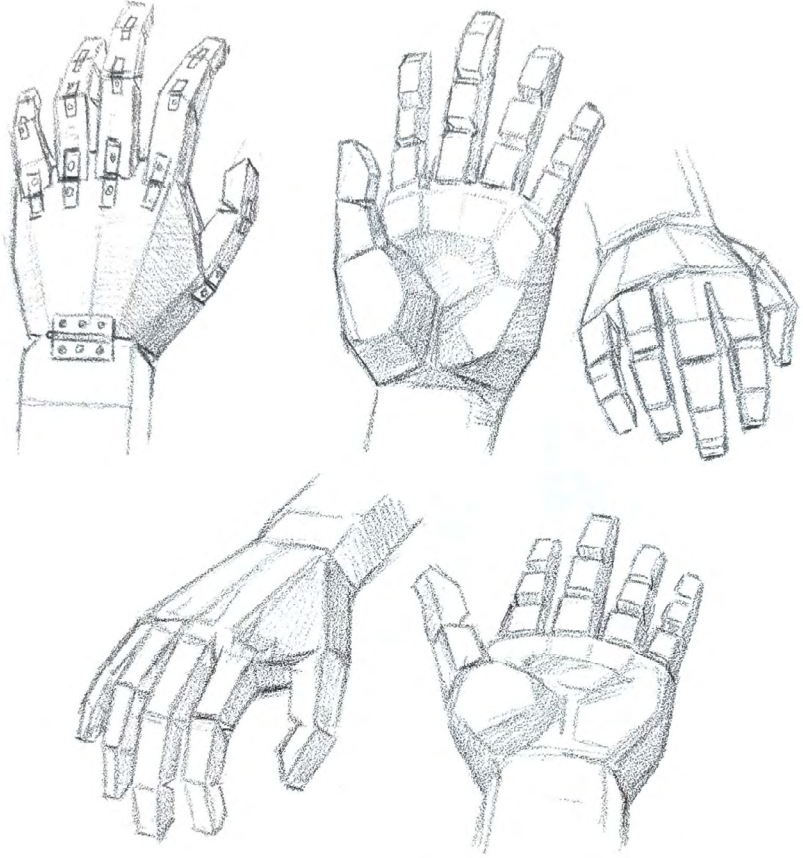
### **Chariot attachment**

Mezek, Southern Bulgaria

3rd c BCE

<https://www.swissinfo.ch/eng/multimedia/celtic-art/294>

# placement



## Drawing the Head and Hands

Andrew Loomis  
1956